



How to Build a .JGW World file for a City2See Image

CAD systems can successfully import City2See images if you build a World file for them. The City2See image should have the file extension .jpg to indicate that it is a JPEG file. So if you have saved your City2See image as 234_Swanston_Street it will actually have the name 234_Swanston_Street.jpg on your hard disk. To make a World file for this you will need to create a small file containing 6 lines of text and you will need to give it the name 234_Swanston_Street.jgw

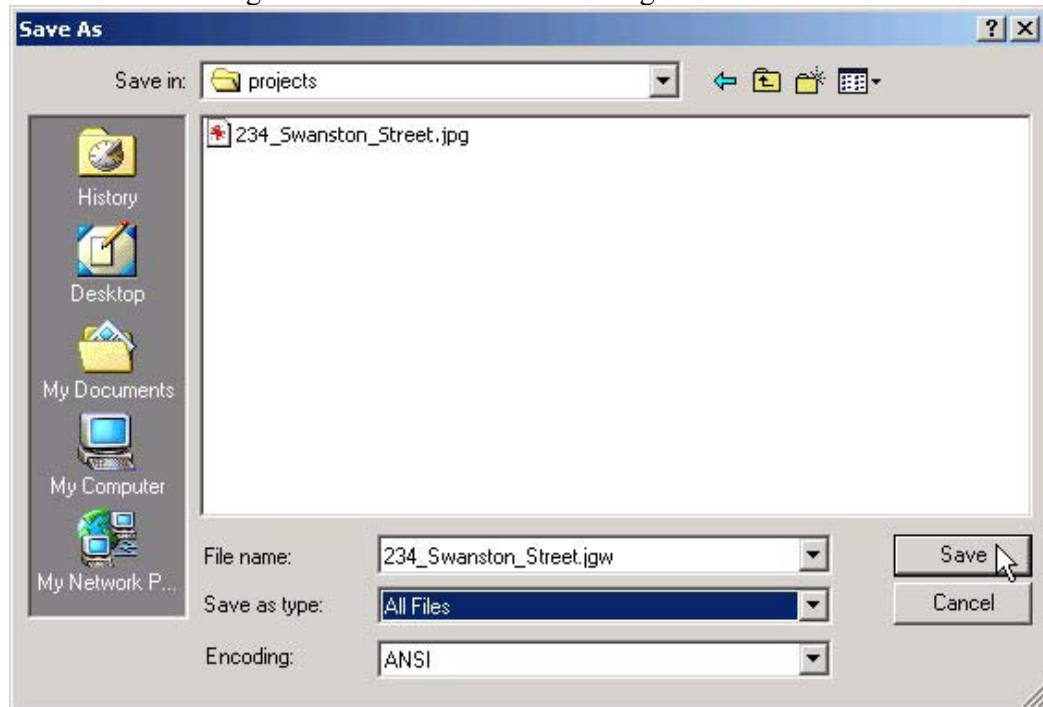
The procedure to make this file on a computer running Microsoft Windows is as follows:

1. Open the folder that contains the City2See image that you have saved and locate the entry for the image. We'll assume for this set of instructions that the image is called **234_Swanston_Street.jgw**
2. Open the **Notepad** editor that comes as one of the Accessories in Microsoft Windows. (Hint: It's usually found from the *Start button* under *Programs* and then *Accessories*).
3. Once **Notepad** opens, click on the File menu near the top left corner. Then click on the **Save As** option.

Now type in the same name into the filename field as you have given your City2See image (e.g. 234_Swanston_Street) and then add **.jgw**

Click on the Save as type chooser and set it to **All Files**

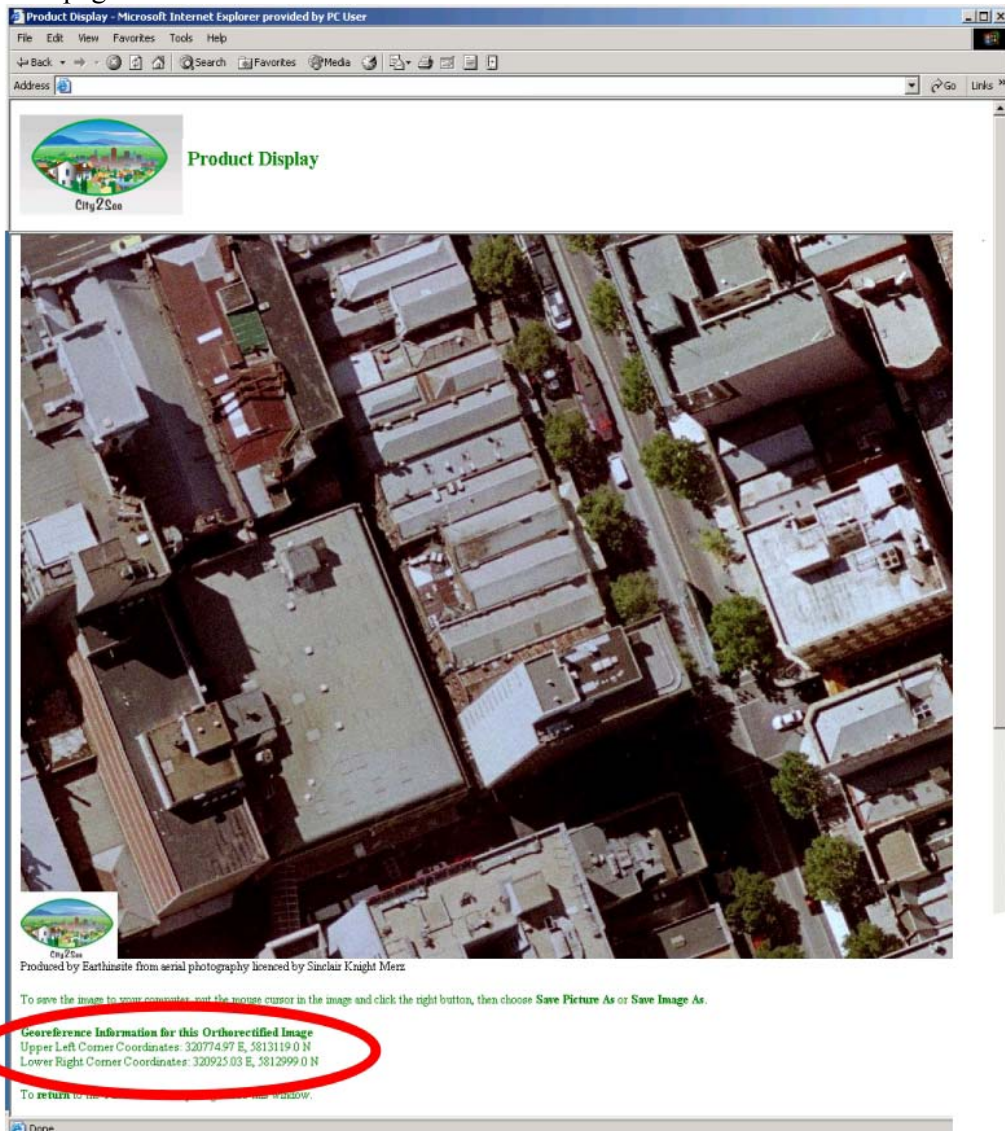
Your Save As dialog box should now look something like this:



Click on the Save button.

Now in **Notepad** you should see the name of your World file on the top bar

4. Now we need to use the information provided on the City2See image page that your image was copied from. You will find this information at the bottom of the page:



For the address in Swanston Steet the georeferencing information is:

Georeference Information for this Orthorectified Image
Upper Left Corner Coordinates: 320774.97 E, 5813119.0 N
Lower Right Corner Coordinates: 320925.03 E, 5812999.0 N
Image width: 1000 pixels ; Image height: 800 lines

5. Now we need to calculate the information for the World file from the georeferencing information.

The World file will need 6 lines.

6. Line 1 is the size of the pixels in the horizontal direction in the jpeg image in metres.

To calculate this value take the Easting of the top left corner away from the Easting of the lower right corner in the City2See image and then divide the answer by the number of pixels of width. For our example this is:

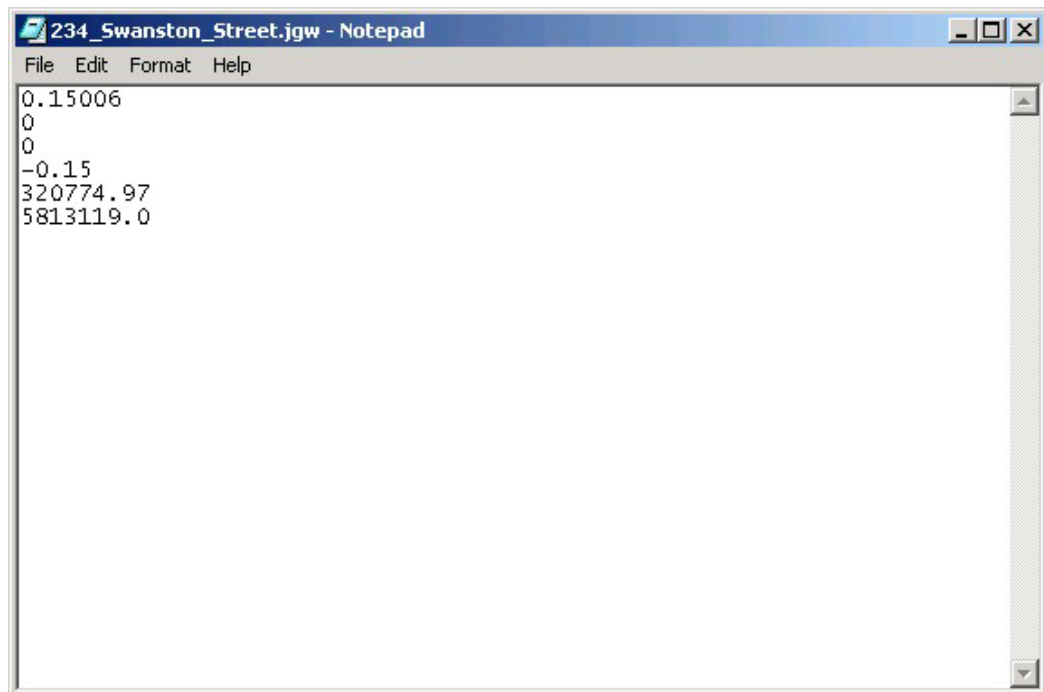
$$= (320925.03 - 320774.97) / 1000$$

$$= 150.06 / 1000$$

$$= 0.15006$$

7. Line 2 and Line 3 are always zero for City2See images
8. Line 4 is the calculated in a similar way to Line 1 but using the Northing values. But in this case, it needs to be a negative number.
So take the Northing value of the top right corner away from the Northing of the bottom left corner and divide by the number of lines in the image:
$$= (5812999.0 - 5813119.0) / 800$$
$$= -120 / 800$$
$$= -0.15$$
9. Line 5 is the Easting coordinate of the top left corner: 320774.97
10. Line 6 is the Northing coordinate of the top left corner: 5813119.0

The completed World file should now look like this:



```
234_Swanston_Street.jpg - Notepad
File Edit Format Help
0.15006
0
0
-0.15
320774.97
5813119.0
```

If you need to copy or move the .jpg City2See image to some other folder or on to a different computer, always make sure that you also copy or move the .jgw World file with it at the same time.